

L'ÉTAGE

LOT 8

Pièces	4
Surface PPE Pondérée	126.55 m ²
Surface PPE	98.50 m ²
Surface Balcon	41.00 m ²
Surface Rooftop	52.50 m ²
Cave	1
Parking	CHF 50'000.-
Prix De Vente (hors parking)	CHF 1'570'000.-

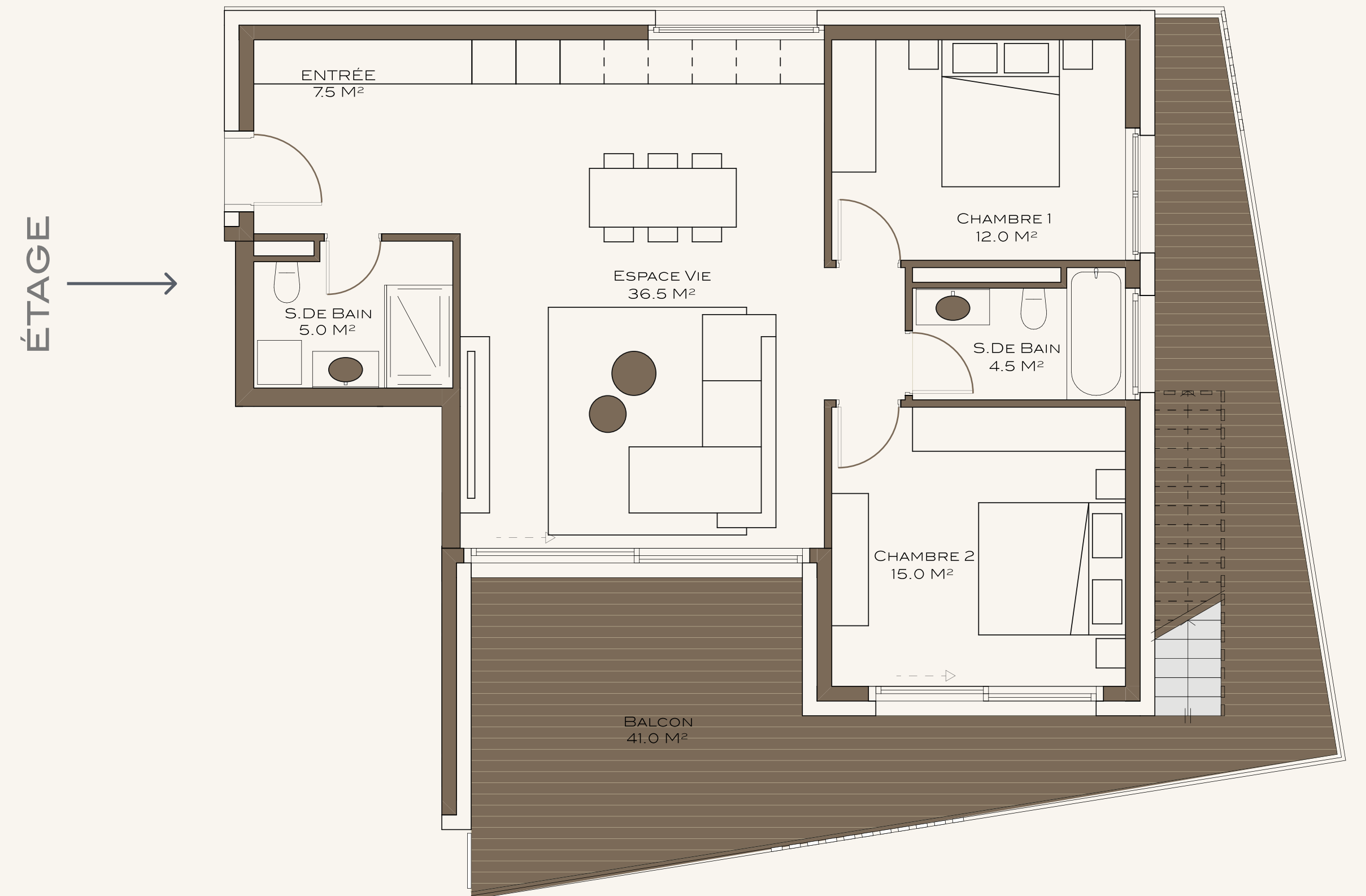


BUDGET CUISINE : CHF 25'000.- TTC

BUDGET SANITAIRE : CHF 8'000.- TTC

BUDGET CARRELAGE : CHF 80.- TTC / M²

BUDGET PARQUET : CHF 120.- TTC / M²



ROOFTOP

